

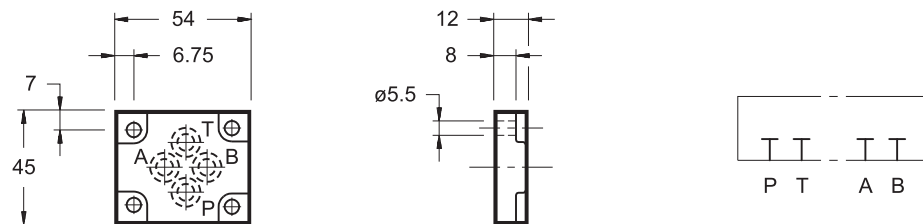
PE

盲板

最高工作压力 **350 bar**

1 - PE-MD1/20外形和安装尺寸 (代码 1950591)

尺寸 mm

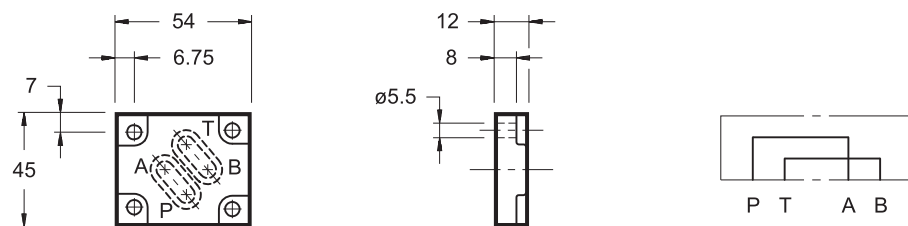


紧固螺栓: 4个螺栓 M5x16

4个OR 型号2037 (9.25x1.78) - 硬度90

2 - PE-C/PA/MD1/20外形和安装尺寸 (代码 1950751)

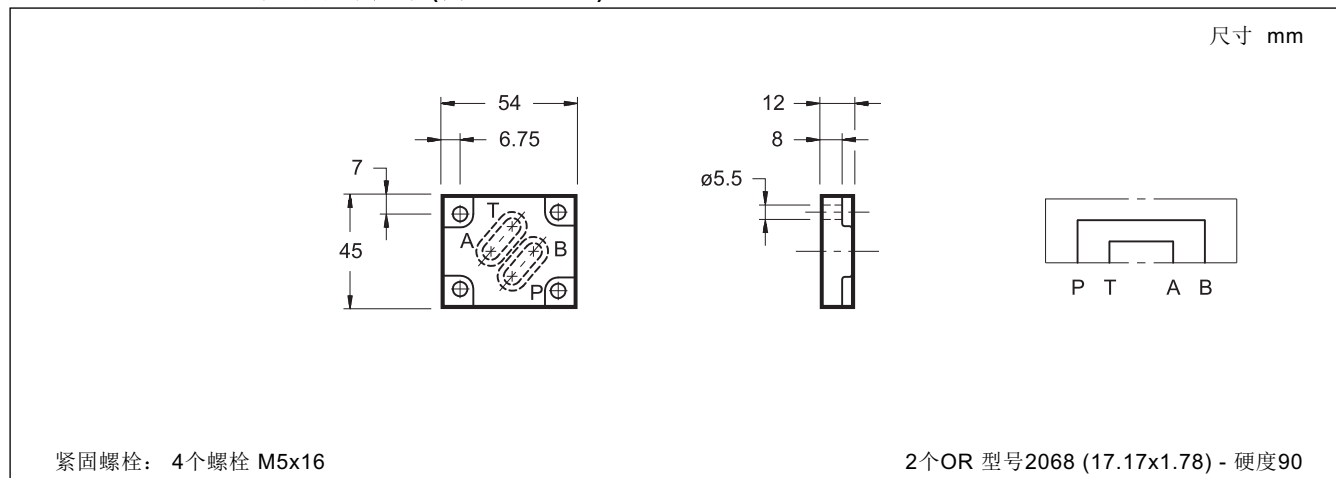
尺寸 mm



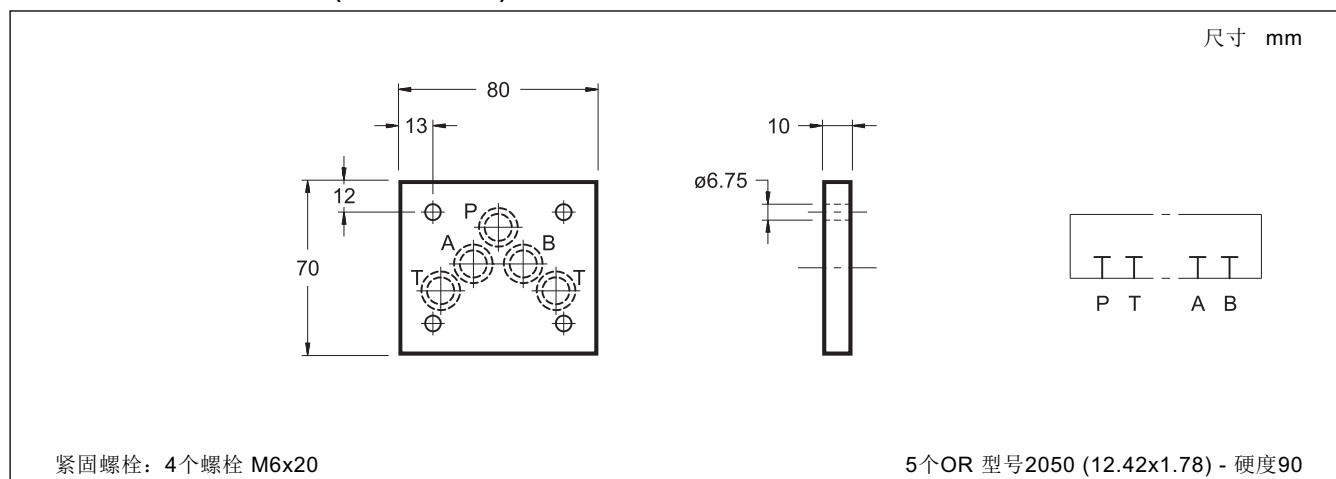
紧固螺栓: 4个螺栓 M5x16

2个OR 型号2068 (17.17x1.78) - 硬度90

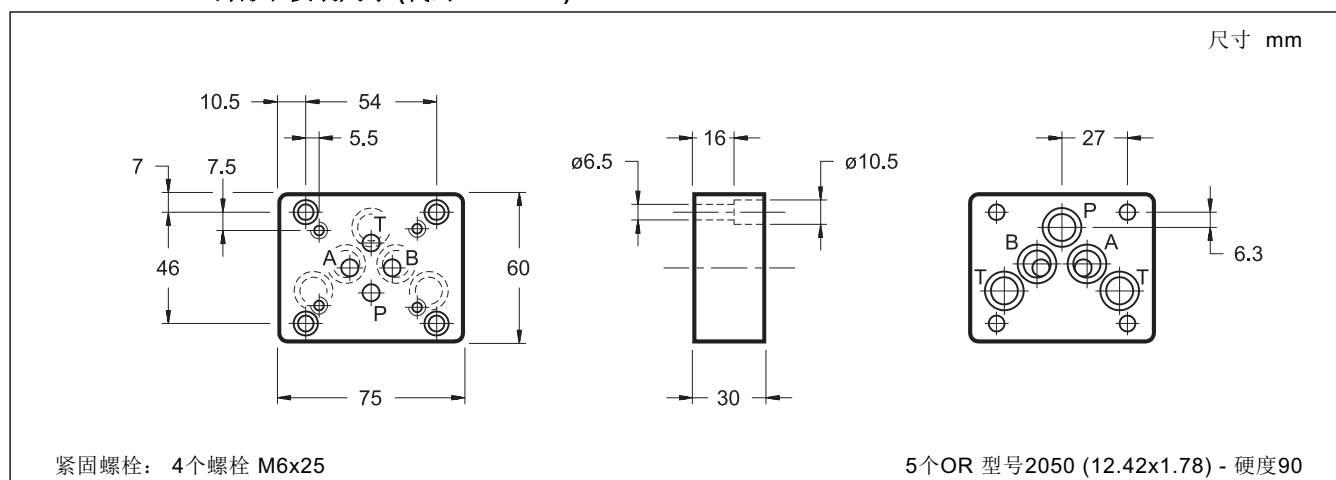
3 - PE-C/PB/MD1/20外形和安装尺寸 (代码 1950601)



4 - PE/D4-M外形和安装尺寸 (代码 1950042)



5 - PC-D4/MD1-M外形和安装尺寸 (代码 1950222)



注意: 若需要, 安装板可以提供氟橡胶O型圈。订购时, 在订货型号的末尾添加字母选项/V。



DIPLOMATIC OLEODINAMICA S.p.A.
 Tel:0769-22714386 Fax:0769-22789076
<http://www.diplomatic.cn>
[mail:sales@diplomatic.cn](mailto:sales@diplomatic.cn)