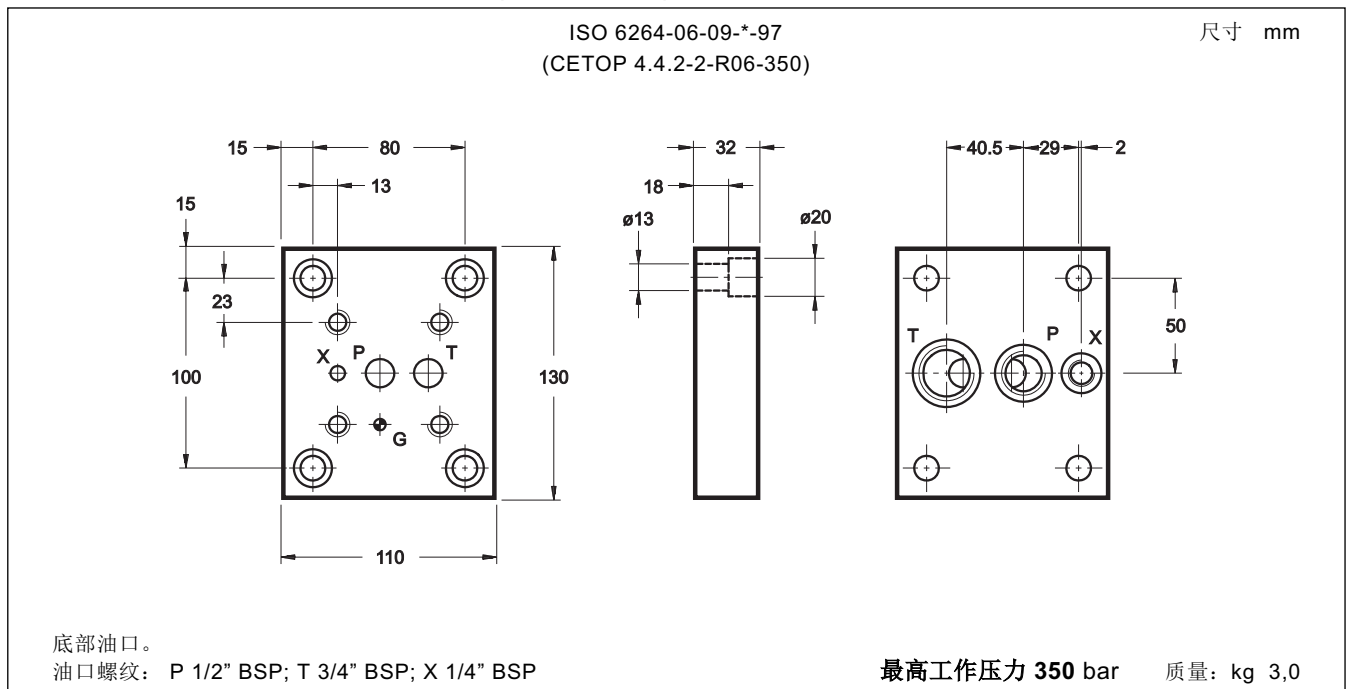
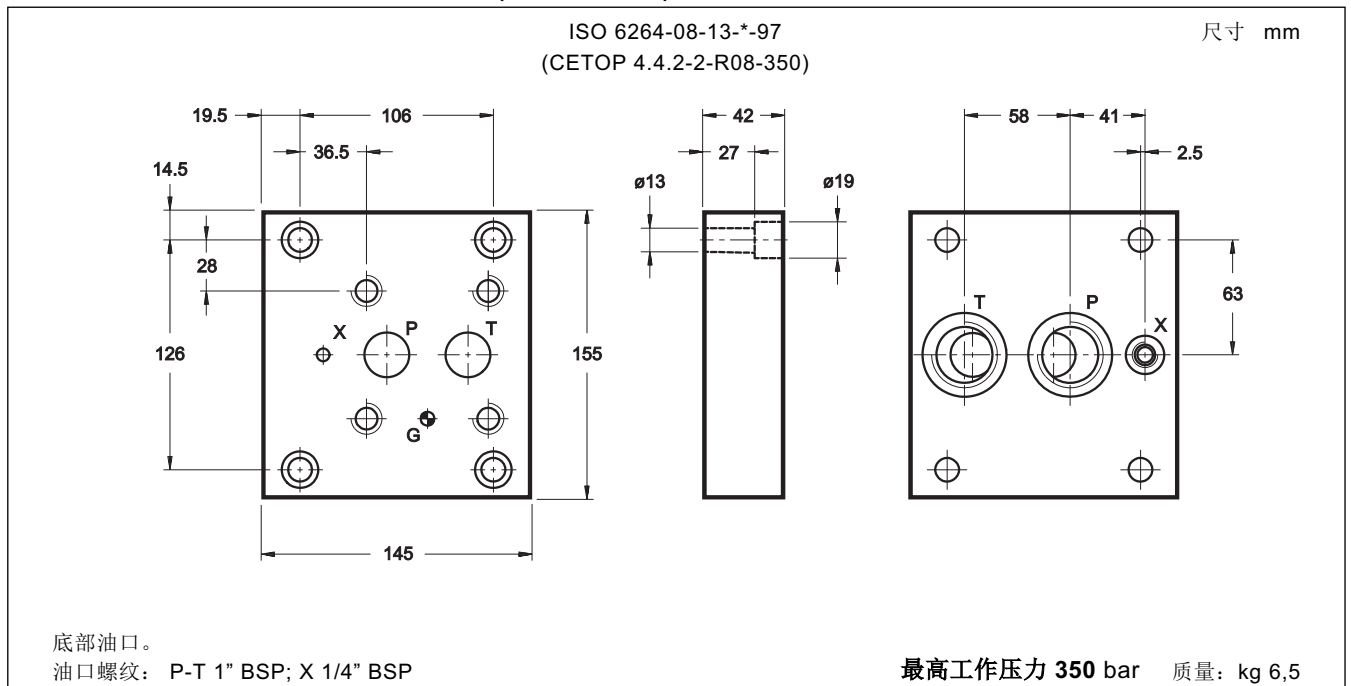


安装板
PMRQ*
压力控制阀
安装板

1 - PMRQ3-AI4G/20安装板外形和安装尺寸 (代码 1961211)



2 - PMRQ5-AI5G/20安装板外形和安装尺寸 (代码 1961221)

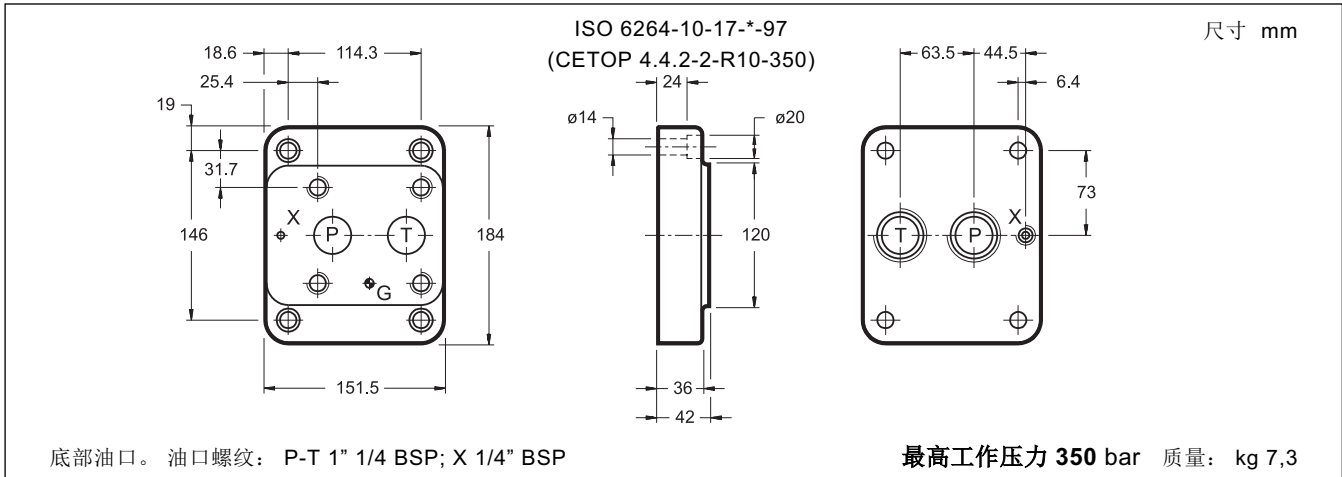




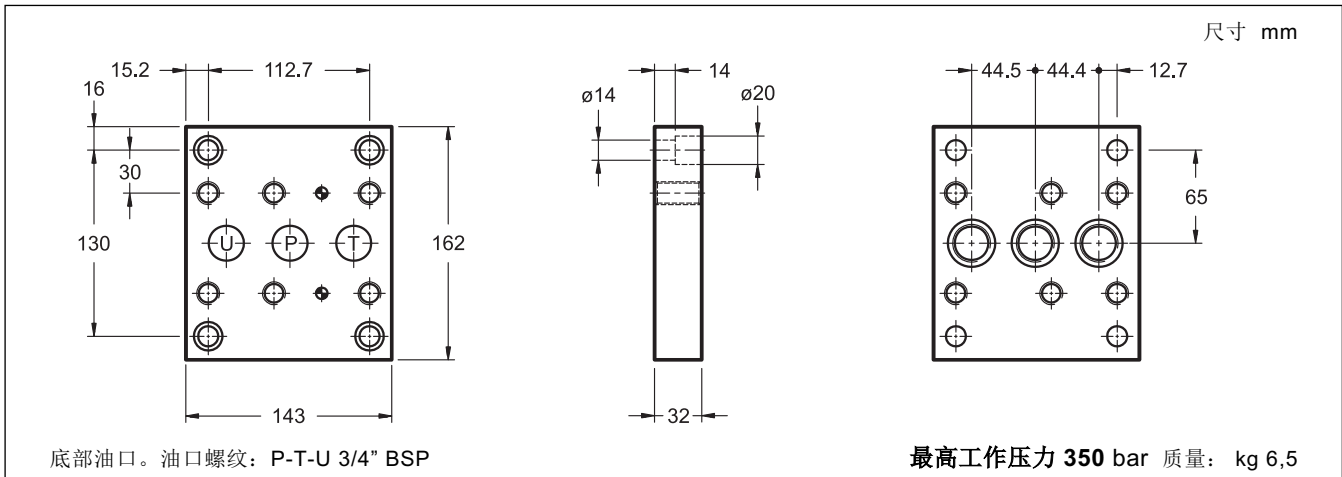
PMRQ*

压力控制阀 安装板

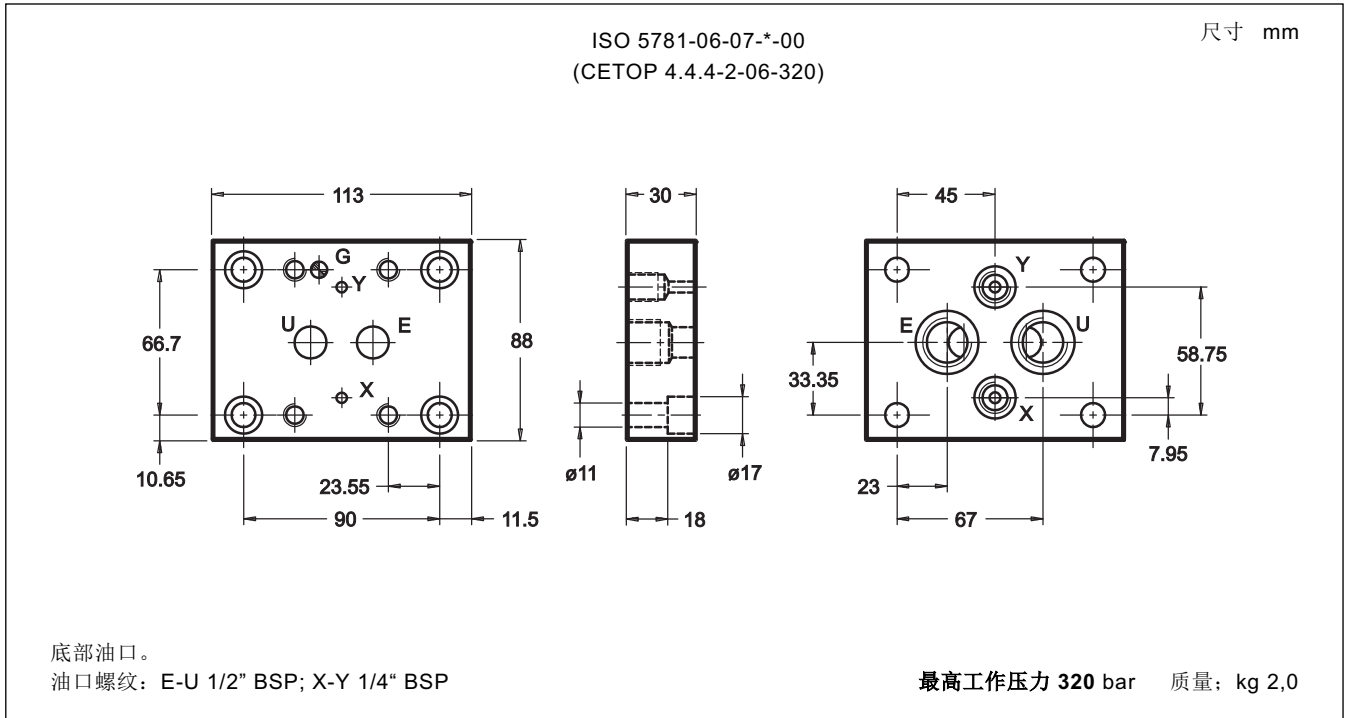
3 - PMRQ7-AI7G/10安装板外形和安装尺寸 (代码 1960051)



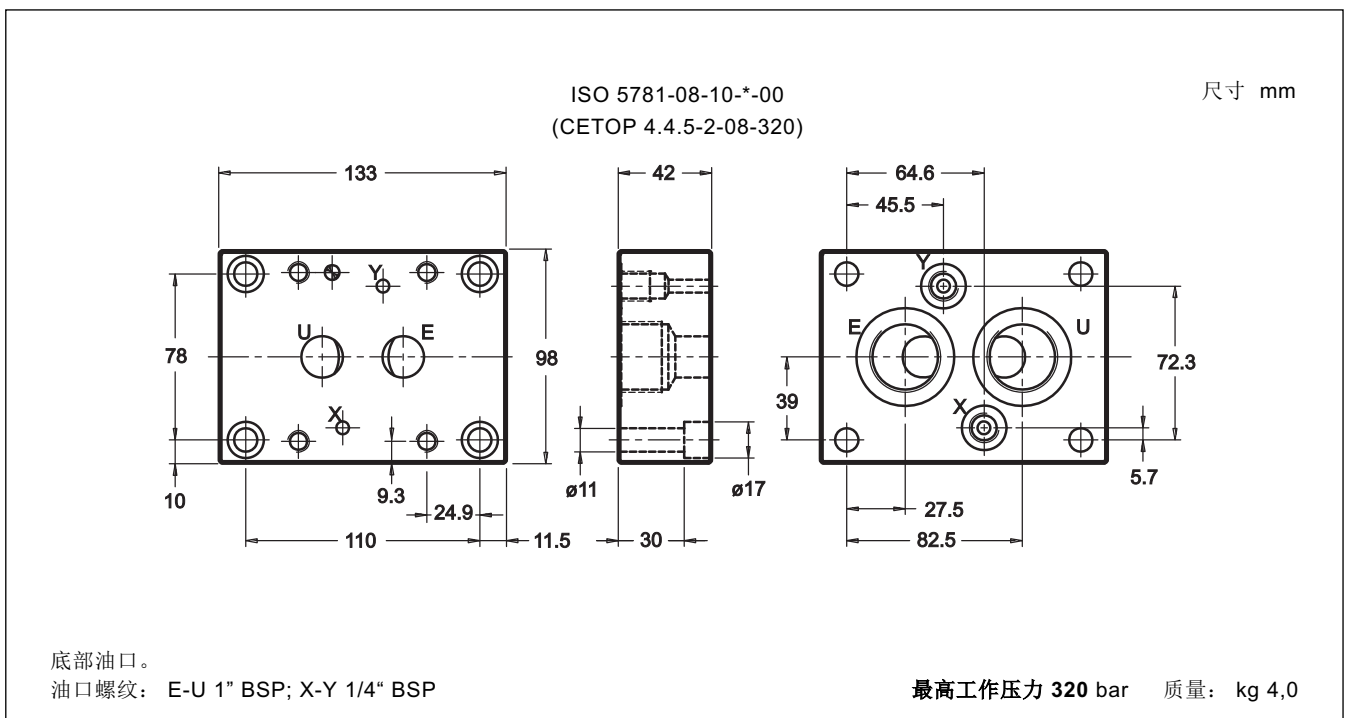
4 - PMRQA5-AI5G/10安装板外形和安装尺寸 (代码 1960070)



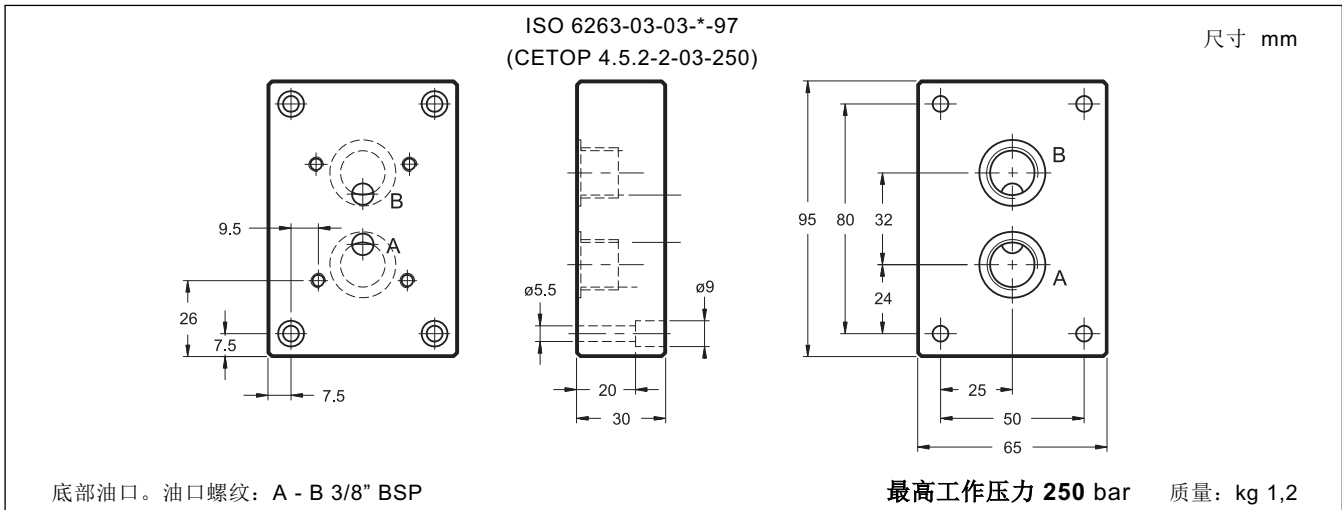
5 - PMSZ3-AI4G/20安装板外形和安装尺寸 (代码 1961231)



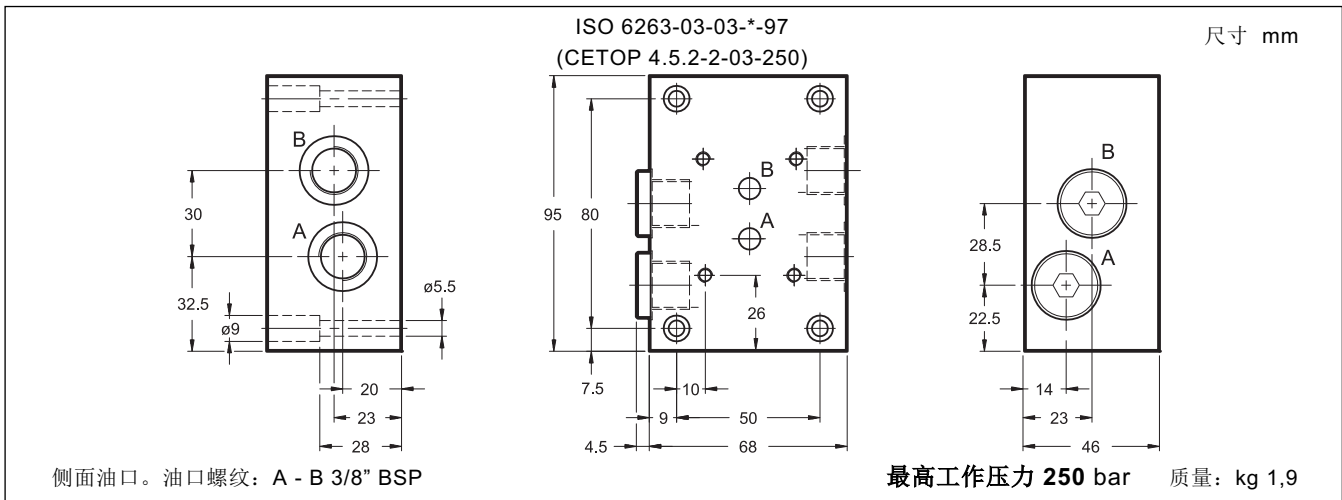
6 - PMSZ5-AI6G/20安装板外形和安装尺寸 (代码 1961241)



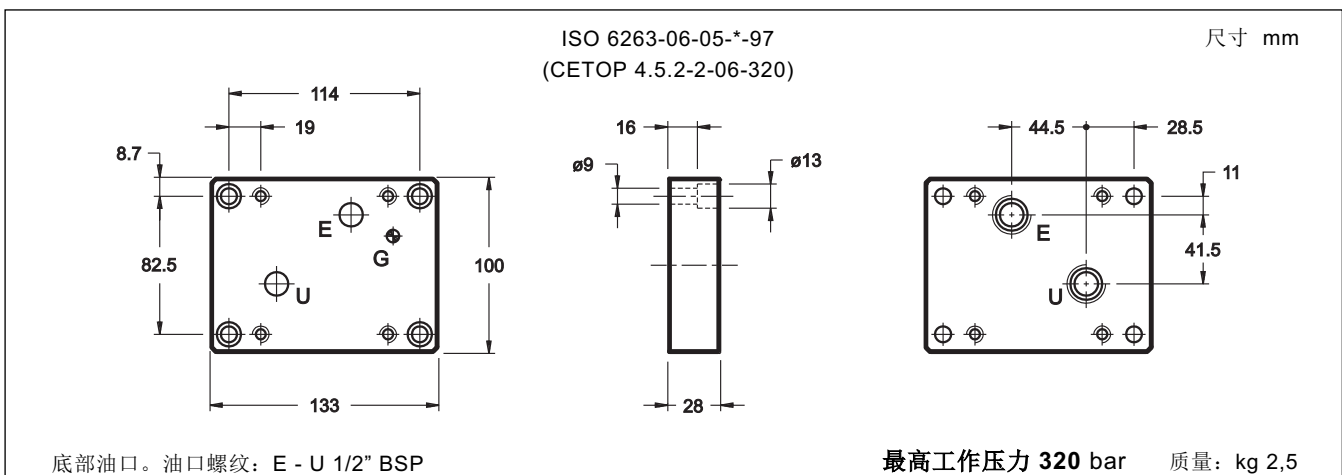
7 - PMRPC1-AI3G/10安装板外形和安装尺寸 (代码 1961045)



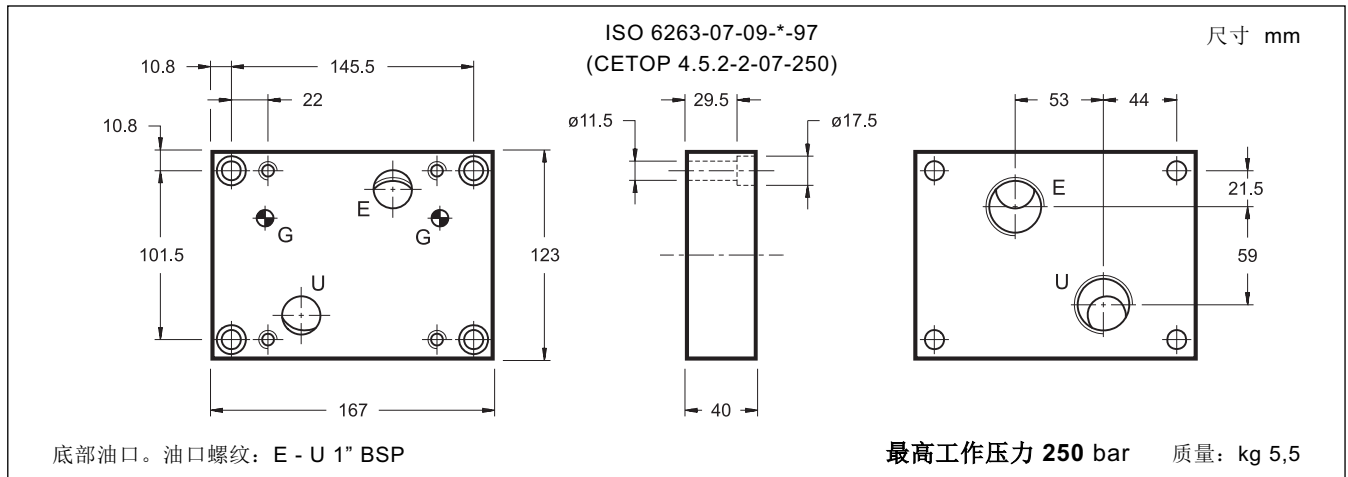
8 - PMRPC1-AL3G/10安装板外形和安装尺寸 (代码 1961051)



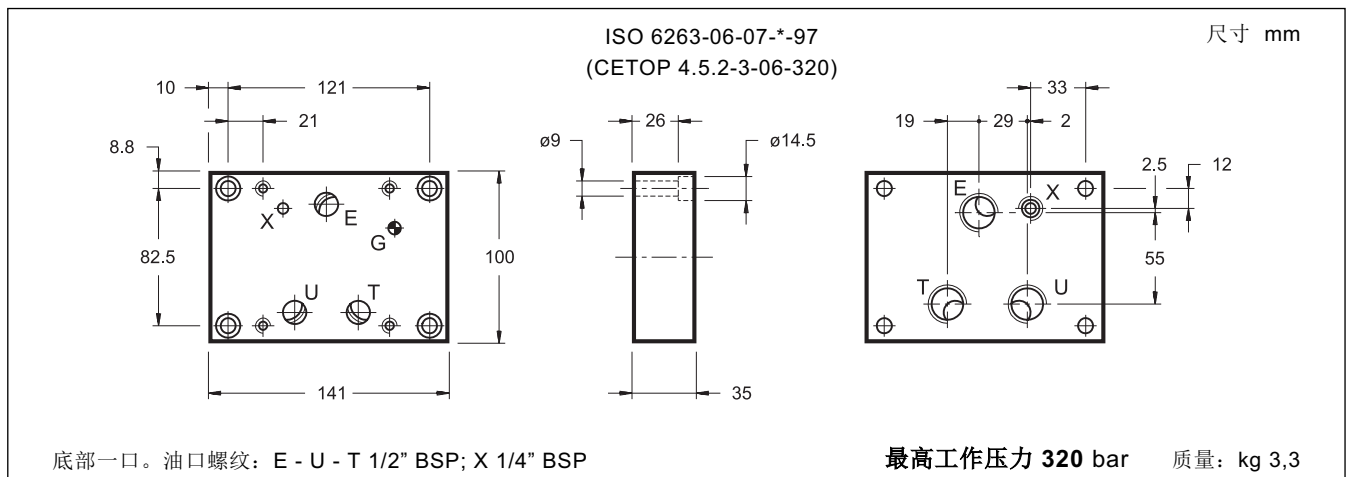
9 - PMRPC2-AI4G/10安装板外形和安装尺寸 (代码 1960330)



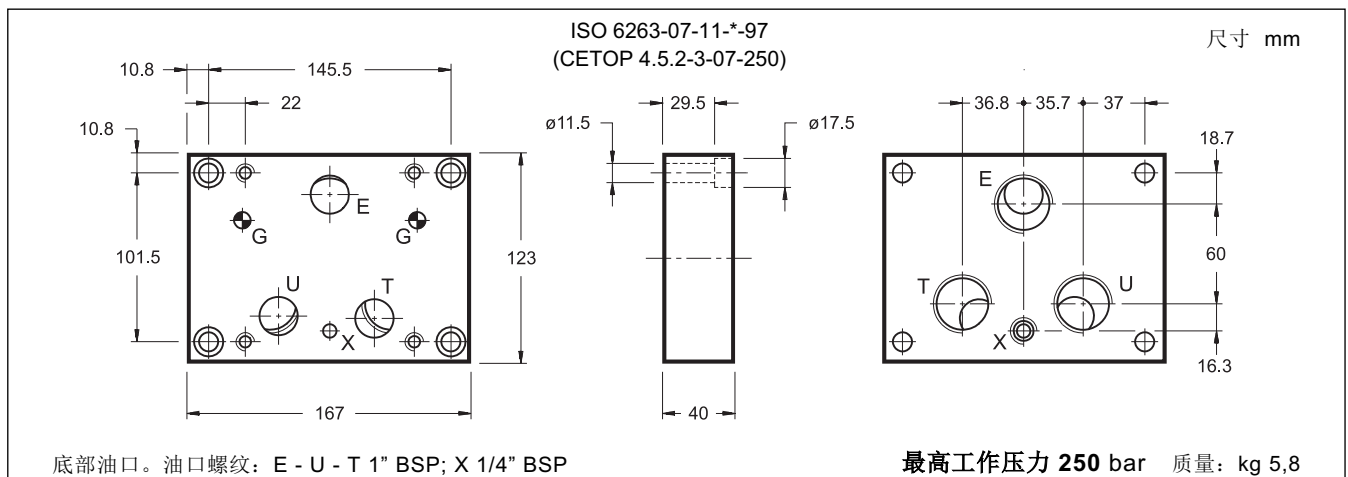
10 - PMRPC3-AI6G/10安装板外形和安装尺寸 (代码 1960511)



11 - PMRPCQ2-AI4G/10安装板外形和安装尺寸 (代码 1960526)



12 - PMRPCQ3-AI6G/10安装板外形和安装尺寸 (代码 1960423)

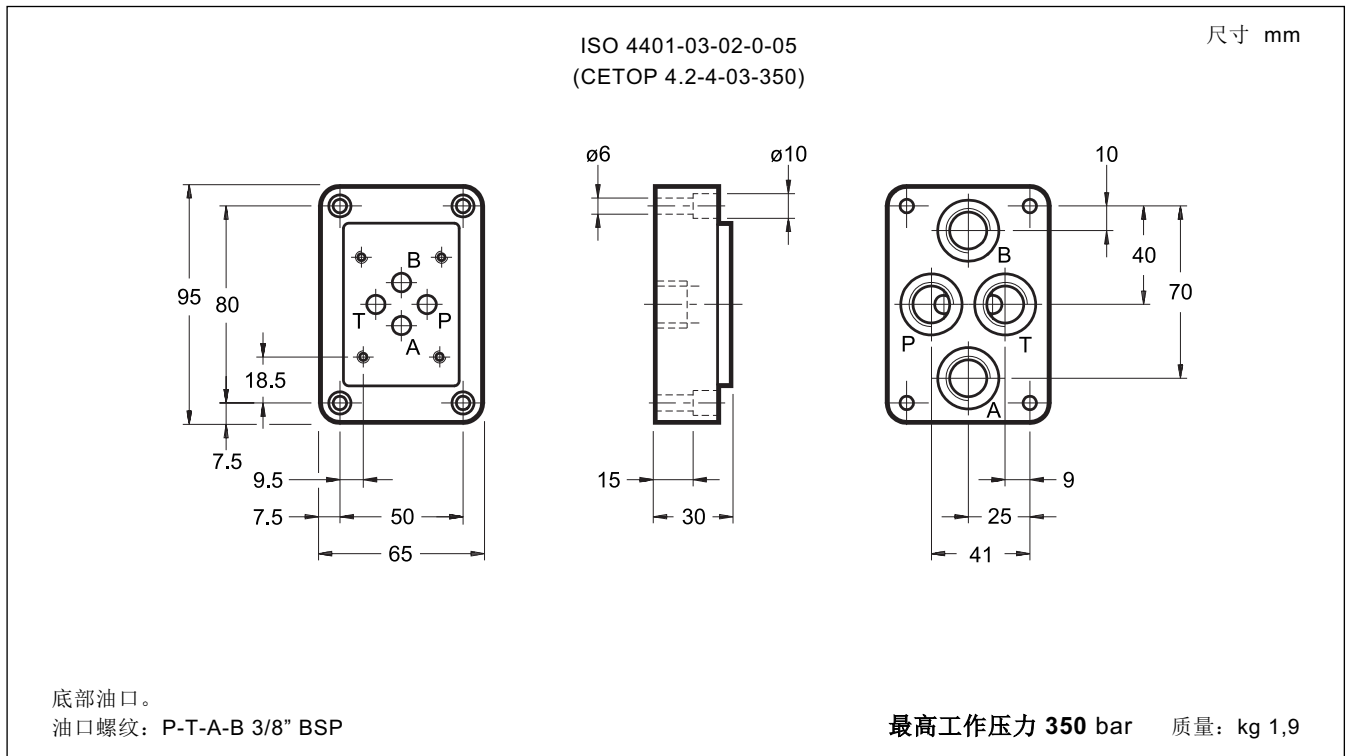




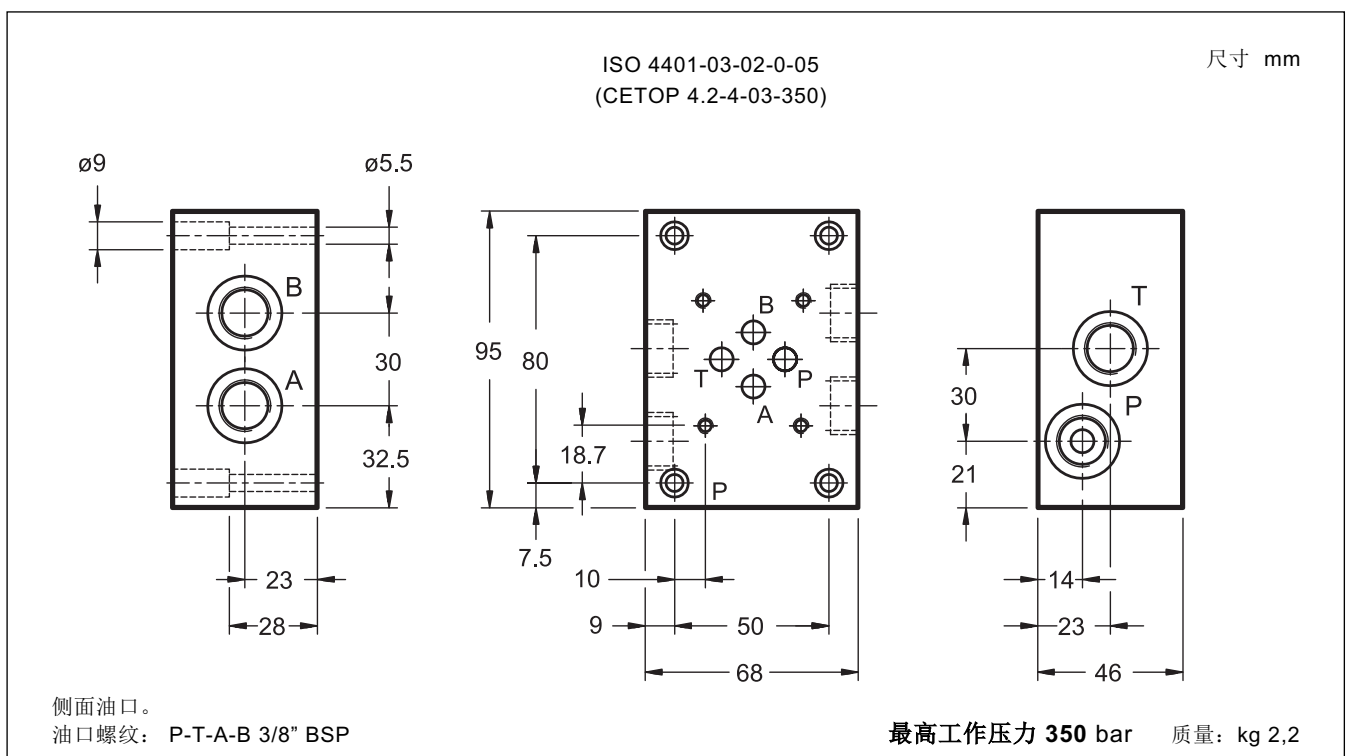
PMMD

ISO 4401-03 (CETOP 03)标准阀 安装板

13 - PMMD-AI3G/20安装板外形和安装尺寸 (代码 1961261)



14 - PMMD-AL3G/11安装板外形和安装尺寸 (代码 1961251)

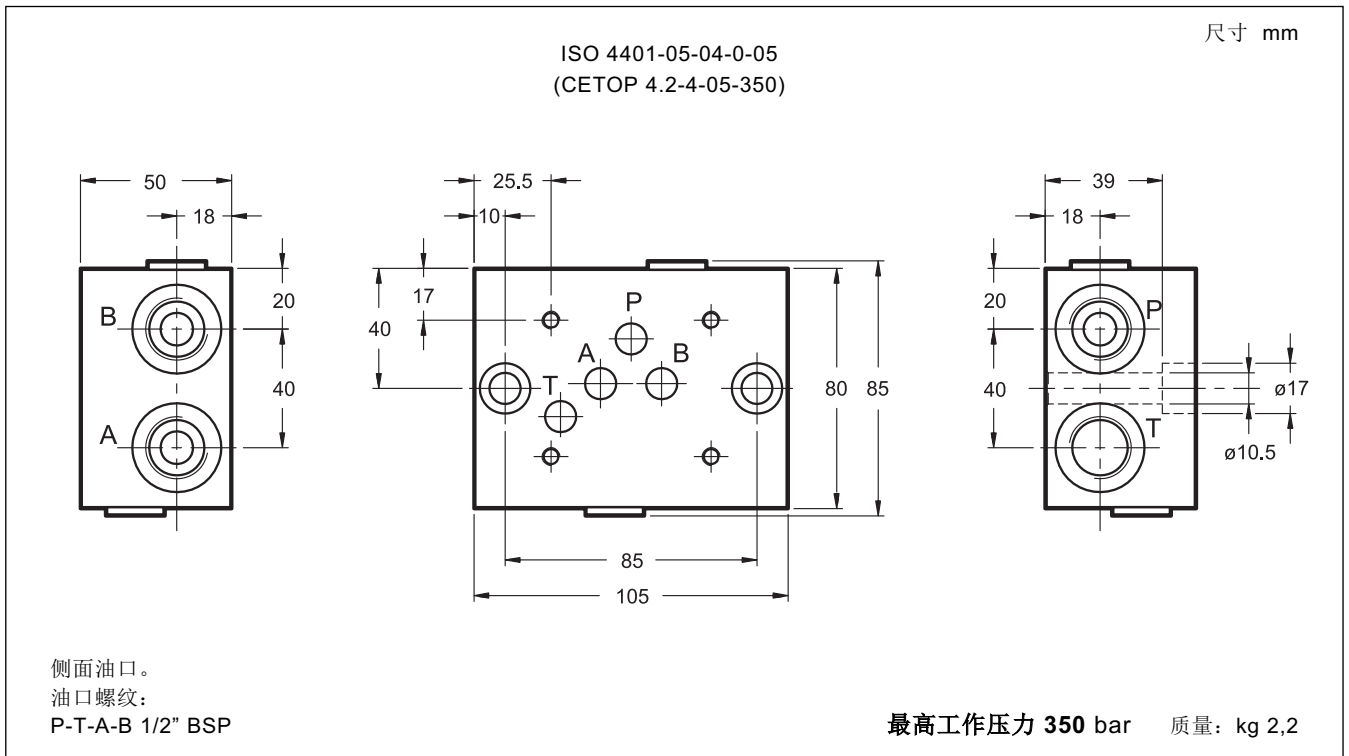




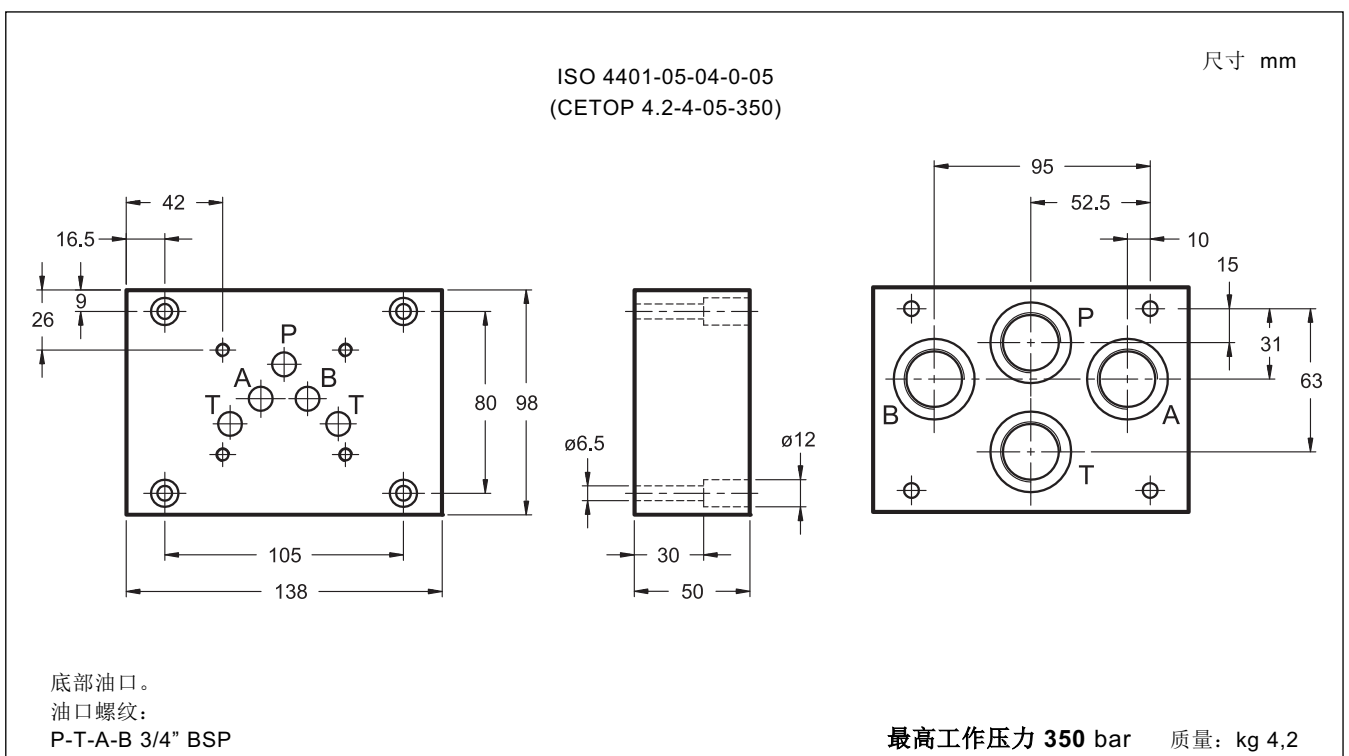
PMD4

ISO 4401-05 (CETOP 05)标准阀 安装板

15 - PMD4-AL4G/10安装板外形和安装尺寸 (代码 1960981)



16 - PMD4-AI4G/20安装板外形和安装尺寸 (cod. 1961271)





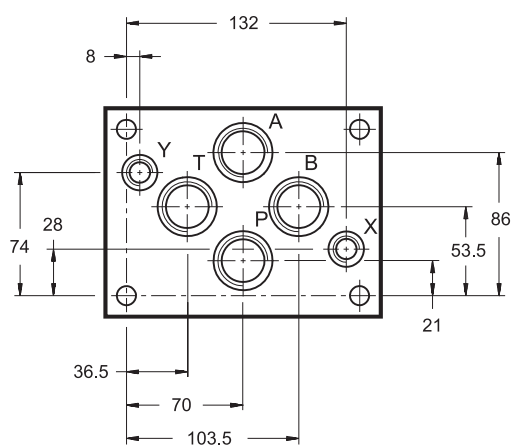
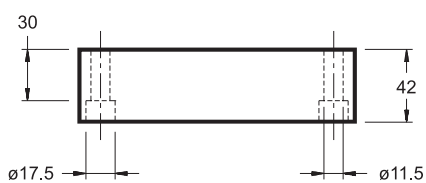
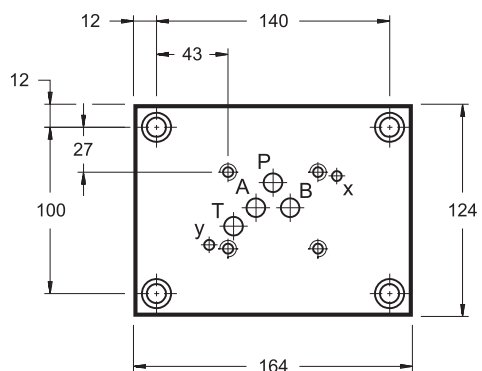
PME4

CETOP P05标准阀
安装板

17 - PME4-AI5G/10安装板外形和安装尺寸 (代码 1961181)

CETOP 4.2-4-P05-320

尺寸 mm



底部油口。
油口螺纹：
P-T-A-B 3/4" BSP
X-Y 1/4" BSP

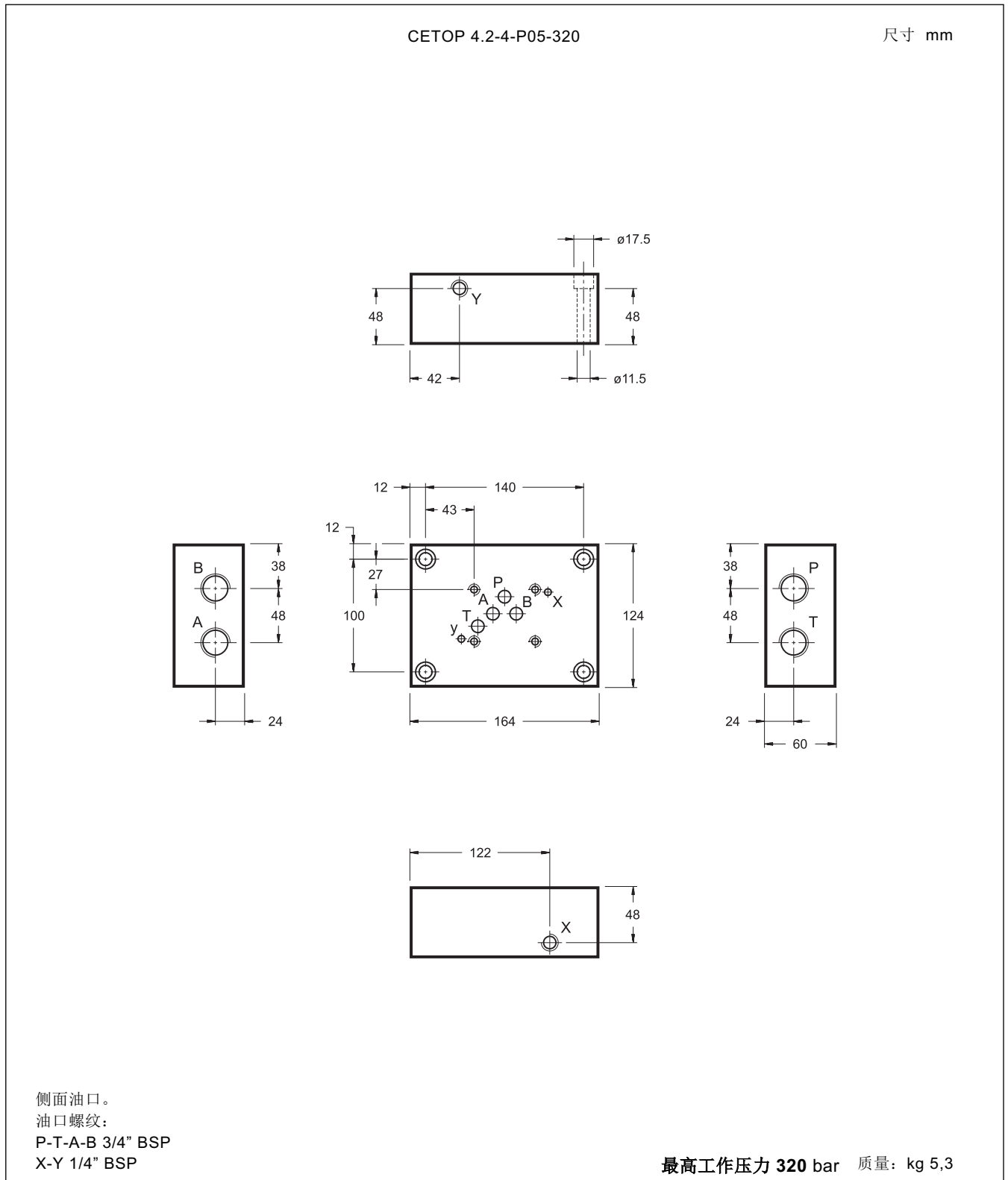
最高工作压力 320 bar 质量: kg 5,3



PME4

CETOP P05标准阀
安装板

18 - PME4-AL5G/10安装板、外形和安装尺寸 (代码 1961201)





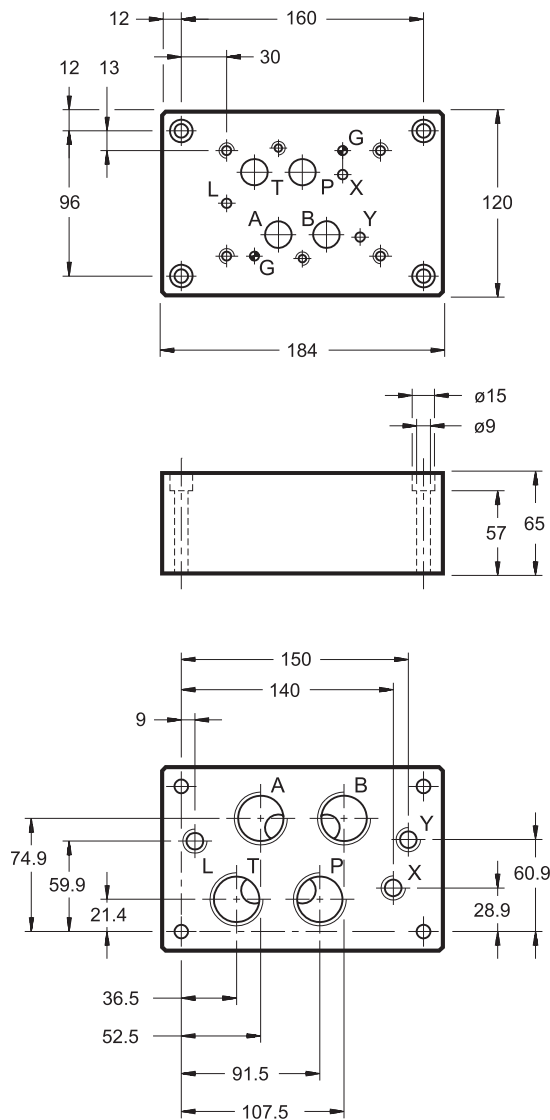
PME07

ISO 4401-07 (CETOP 07)标准阀
安装板

19 - PME07-AI6G/10安装板外形和安装尺寸 (代码 1961071)

尺寸 mm

ISO 4401-07-07-0-05
(CETOP 4.2-4-07-350)



底部油口。
油口螺纹：
P-T-A-B 1" BSP
X-Y-L 1/4" BSP

最高工作压力 350 bar

质量: kg 9



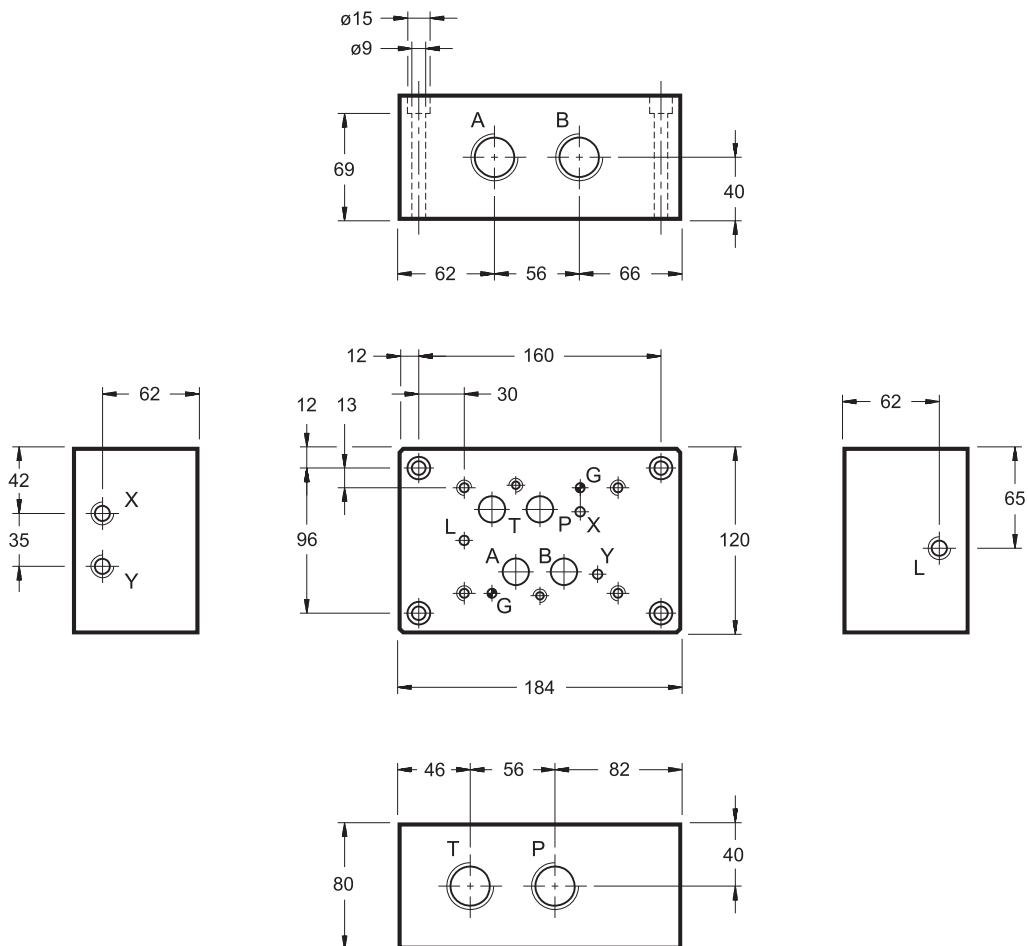
PME07

ISO 4401-07 (CETOP 07)标准阀
安装板

20 - PME07-AL6G/10安装板外形和安装尺寸 (代码 1961111)

尺寸 mm

ISO 4401-07-07-0-05
(CETOP 4.2-4-07-350)



侧面油口。
油口螺纹：
P-T-A-B 1" BSP
X-Y-L 1/4" BSP

最高工作压力 350 bar

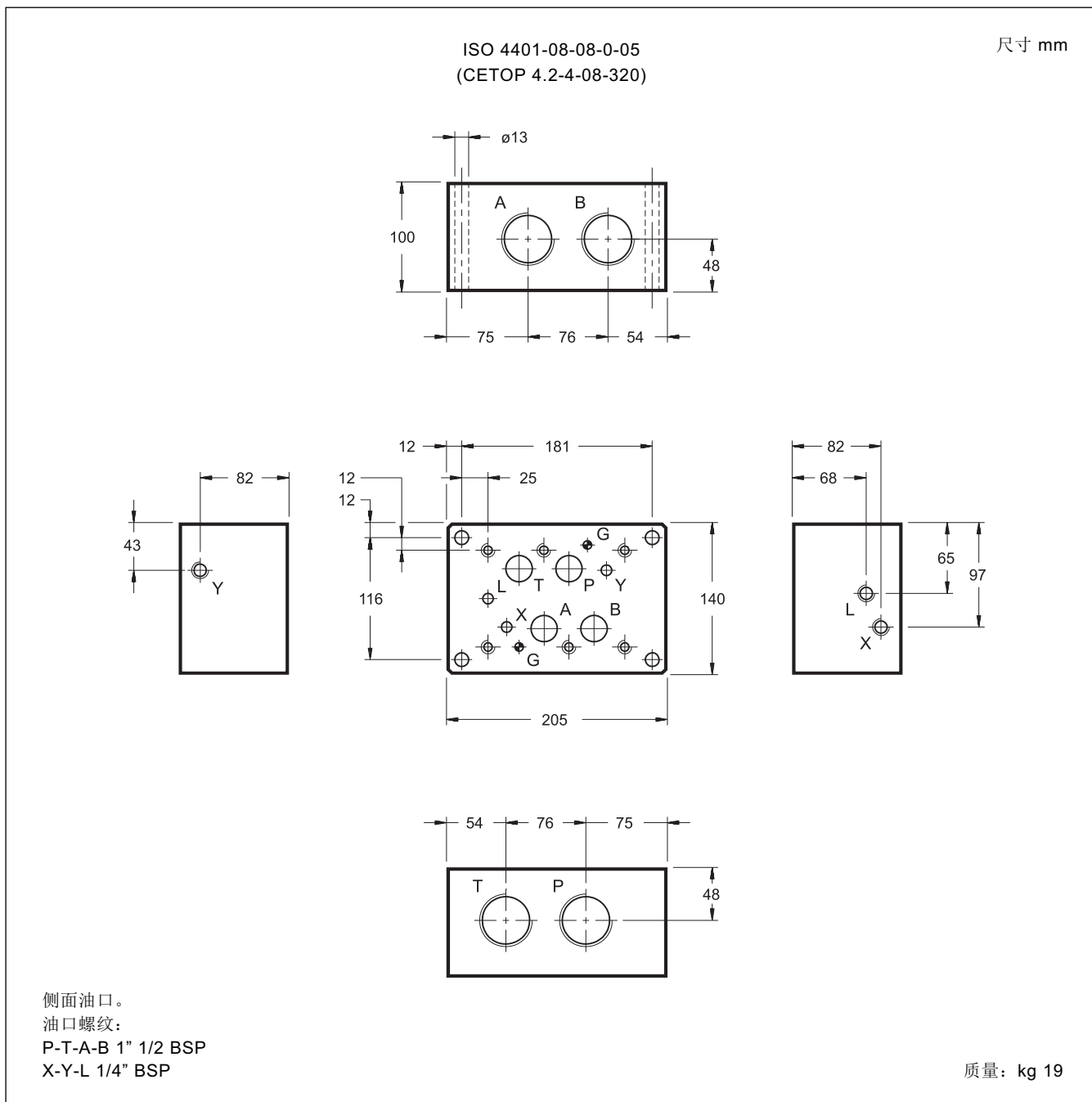
质量: kg 11,5



PME5

ISO 4401-08 (CETOP 08)标准阀 安装板

21 - PME5-AL8G/10安装板外形和安装尺寸 (代码 1961141)



DIPLOMATIC OLEODINAMICA S.p.A.
Tel:0769-22714386 Fax:0769-22789076
<http://www.diplomatic.cn>
[mail:sales@diplomatic.cn](mailto:sales@diplomatic.cn)